

# ODM Quality Report

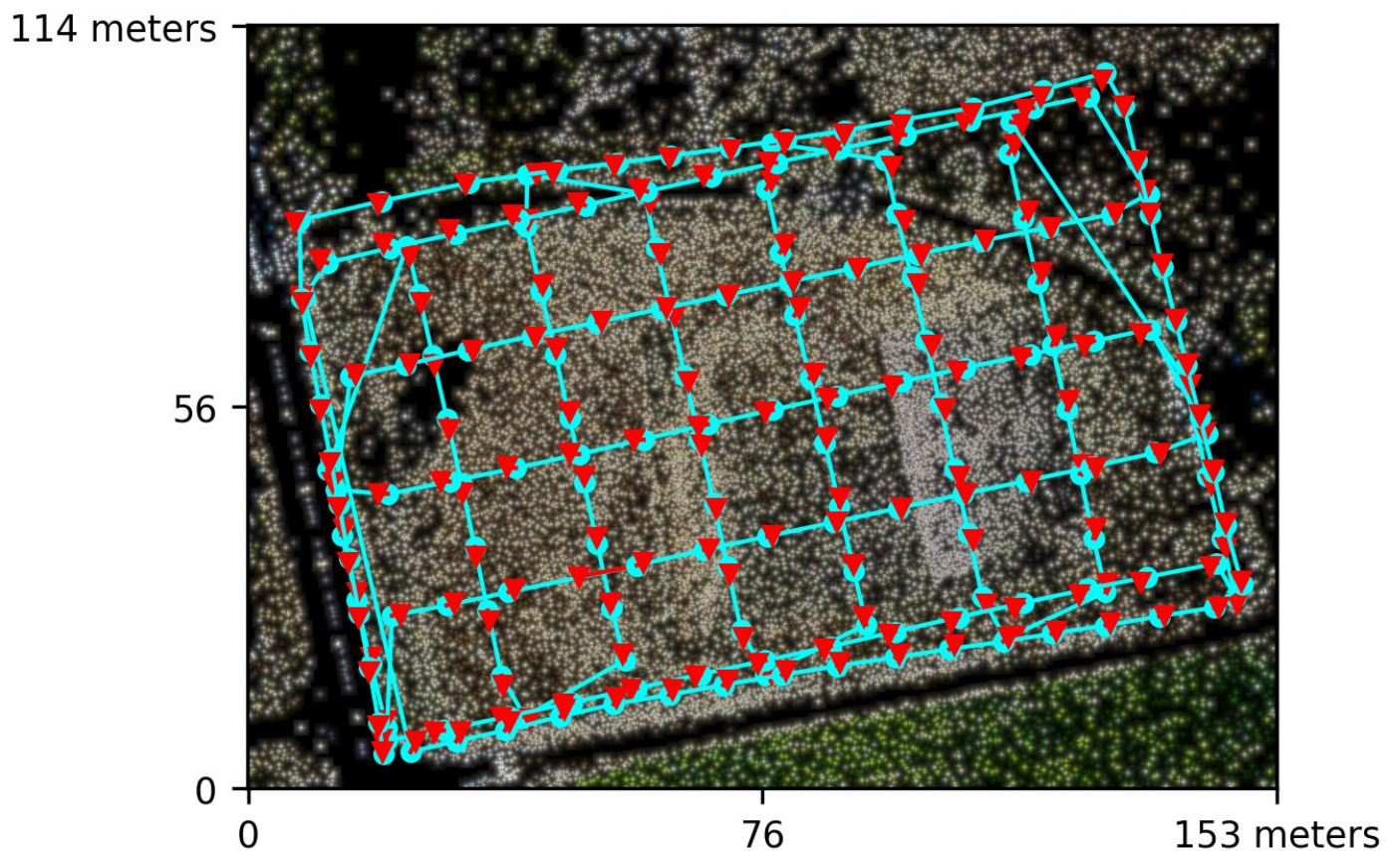
Processed with ODM version 2.5.7

## Dataset Summary

Date	29/06/2021 at 14:13:46
Area Covered	0.014269 km <sup>2</sup>
Processing Time	2.0h:44.0m:59.0s

## Processing Summary

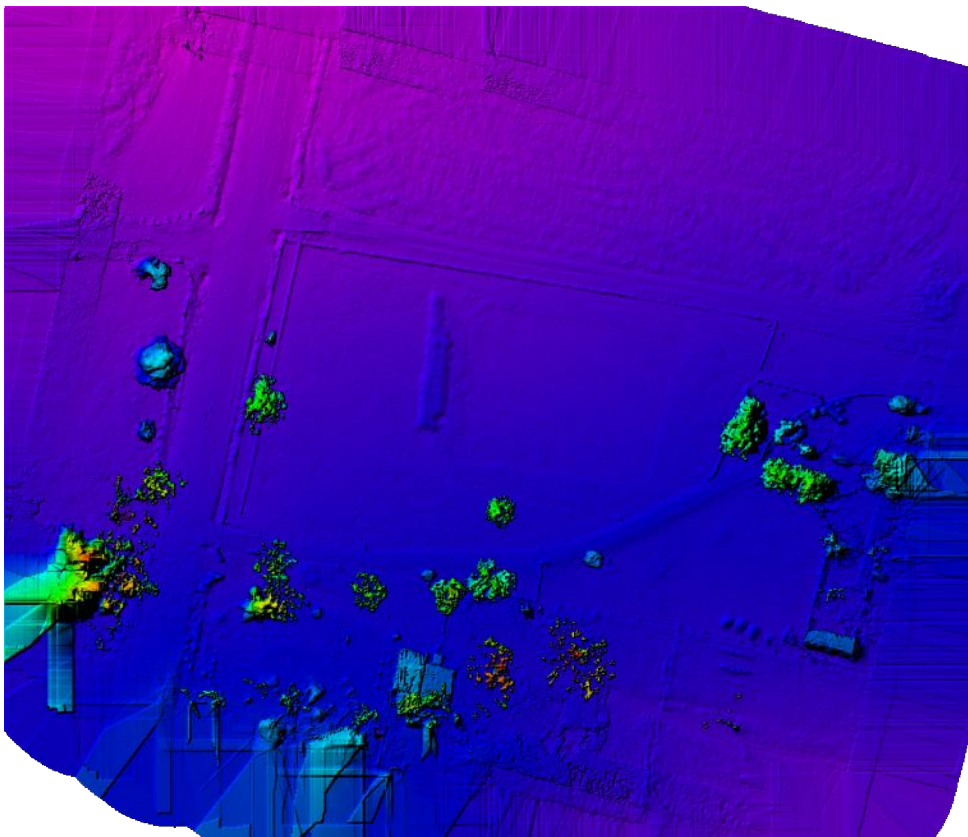
Reconstructed Images	182 over 182 shots (100.0%)
Reconstructed Points (Sparse)	609536 over 707375 points (86.2%)
Reconstructed Points (Dense)	44,117,343 points
Average Ground Sampling Distance (GSD)	1.4 cm
Reconstructed Components	1 component
Detected Features	24,224 features
Reconstructed Features	11,919 features
Geographic Reference	GPS
GPS errors	1.17 meters



# Previews



Orthophoto



Digital Surface Model

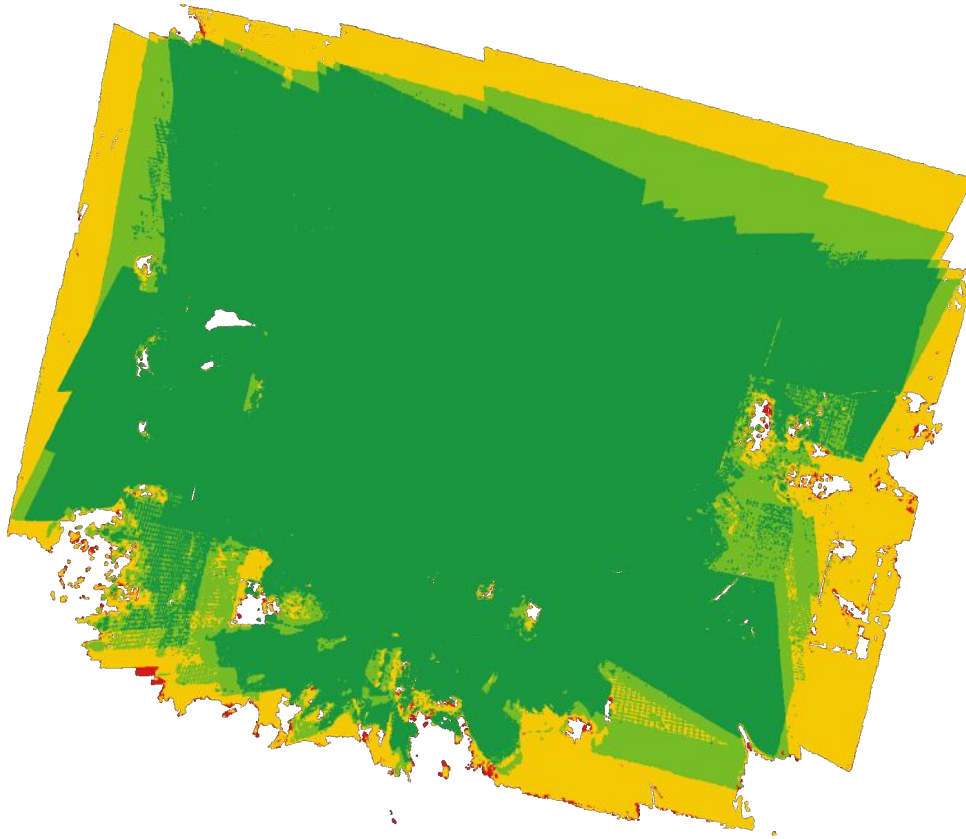


885.35m

911.39m



## Survey Data

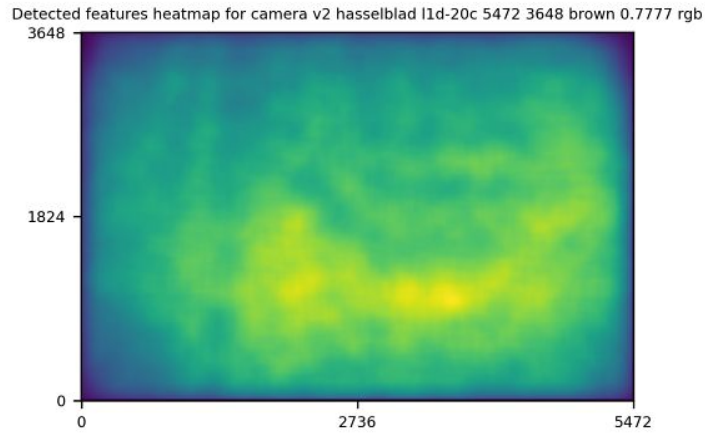


■ 2 ■ 3 ■ 4 ■ 5+

## GPS/GCP Errors Details

GPS	Mean	Sigma	RMS Error
X Error (meters)	0.000	0.992	0.992
Y Error (meters)	0.000	0.758	0.758
Z Error (meters)	0.000	0.544	0.544
Total			1.172

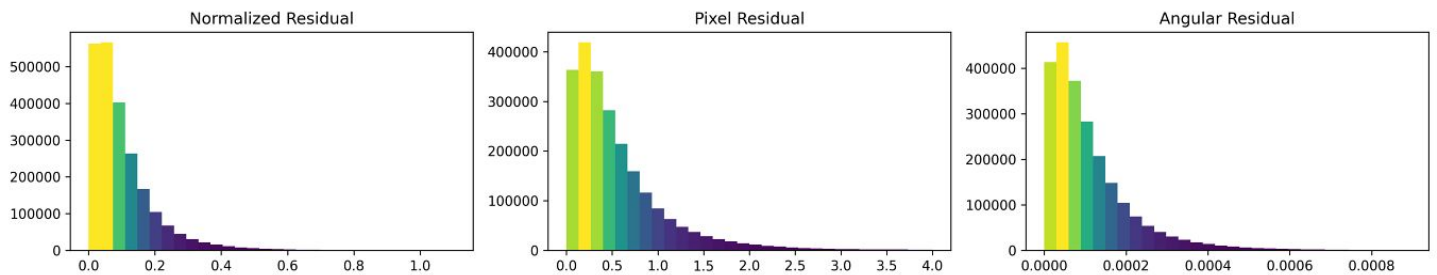
# Features Details



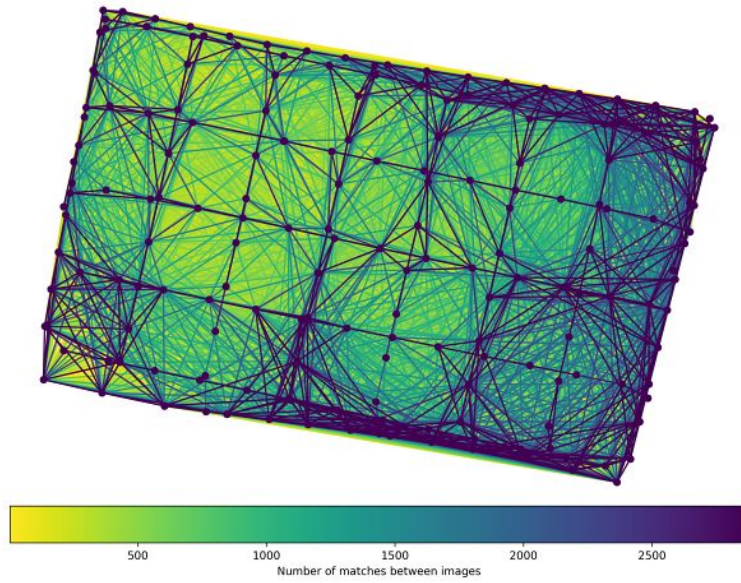
	Min.	Max.	Mean	Median
Detected	9820	50760	25880	24224
Reconstructed	2079	30156	12713	11919

# Reconstruction Details

Average Reprojection Error (normalized / pixels / angular)	0.10 / 0.55 / 0.00011
Average Track Length	3.80 images
Average Track Length (> 2)	5.45 images



# Tracks Details



Length	2	3	4	5	6	7	8	9	10
Count	292540	121264	63450	38118	24673	17329	12014	8690	6343

# Camera Models Details

**v2 hasselblad l1d-20c 5472 3648 brown 0.7777 rgb**

	k1	k2	k3	p1	p2	focal	aspect_ratio	cx	cy
Initial	0.0000	0.0000	0.0000	0.0000	0.0000	0.7778	1.0000	0.0000	0.0000
Optimized	0.0120	0.0288	-0.0279	-0.0016	0.0008	0.8132	1.0000	0.0022	-0.0173

