

ODM Quality Report

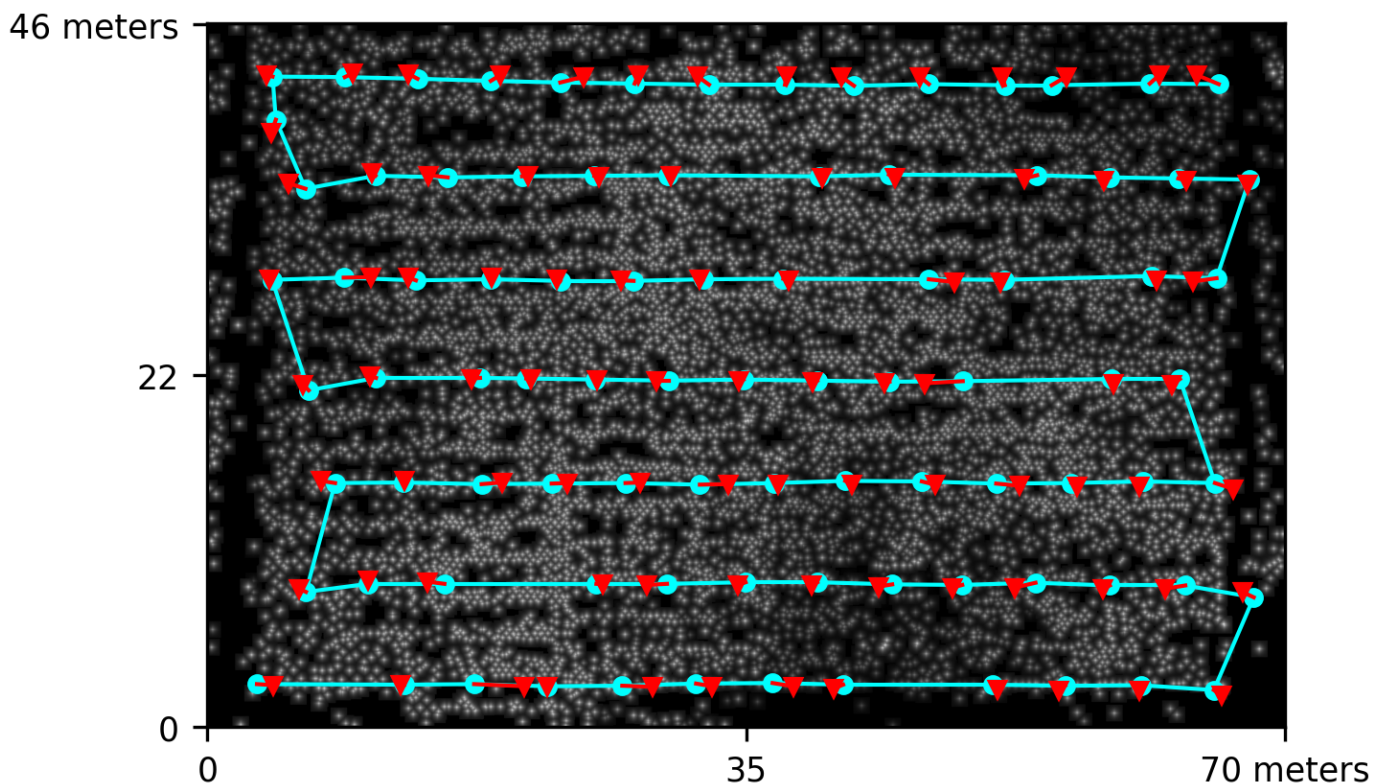
Processed with ODM version 3.1.7

Dataset Summary

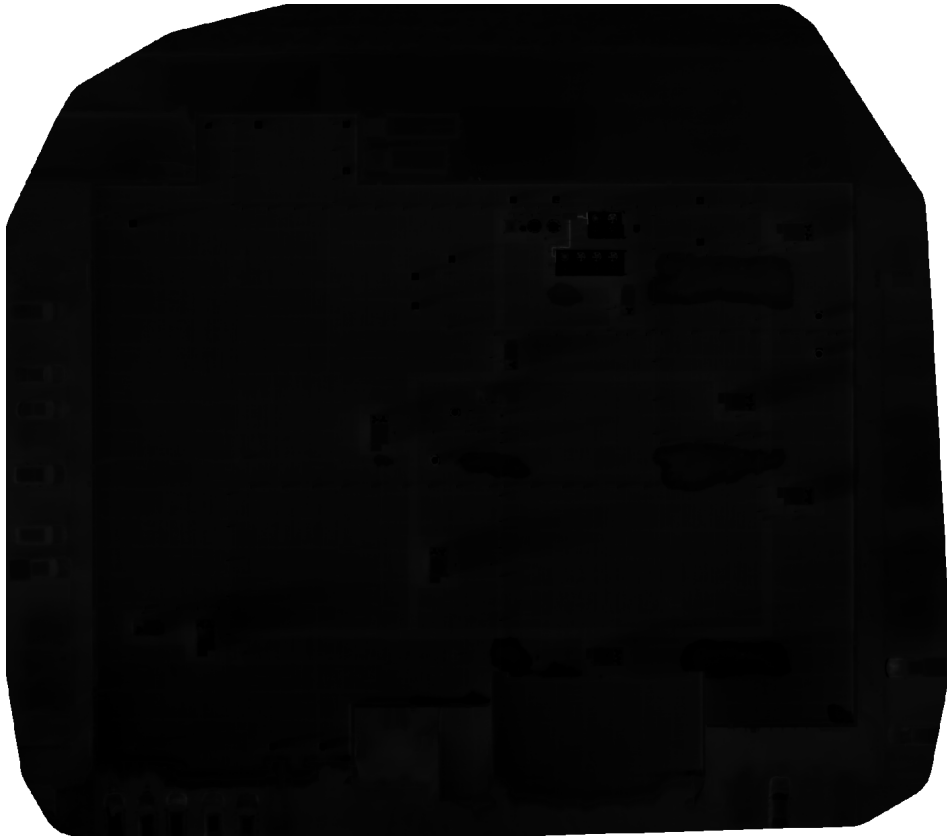
Date	07/10/2023 at 04:43:01
Area Covered	0.002611 km ²
Processing Time	9.0m:31.0s
Capture Start	07/10/2023 at 01:55:12
Capture End	07/10/2023 at 01:59:22

Processing Summary

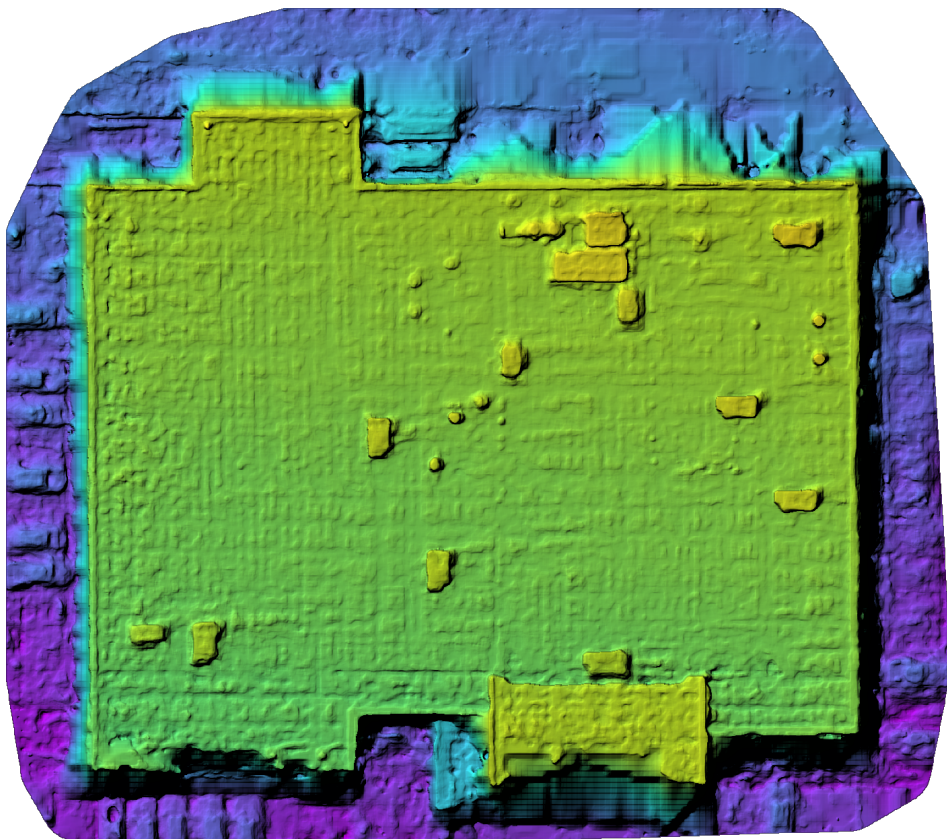
Reconstructed Images	89 over 89 shots (100.0%)
Reconstructed Points (Sparse)	11761 over 11930 points (98.6%)
Reconstructed Points (Dense)	4,732,062 points
Average Ground Sampling Distance (GSD)	4.3 cm
Detected Features	1,161 features
Reconstructed Features	496 features
Geographic Reference	GPS
GPS errors	0.82 meters



Previews



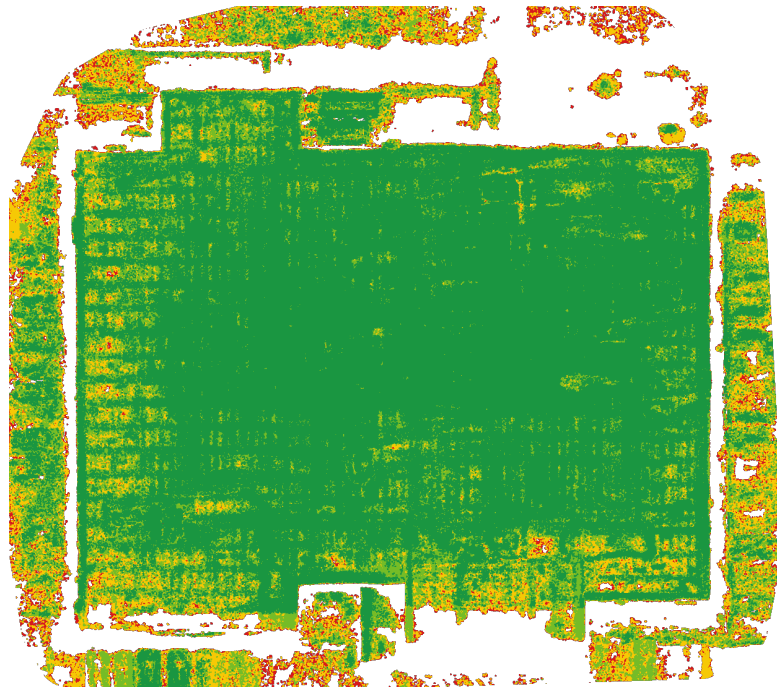
Orthophoto



Digital Surface Model



Survey Data



■ 2 ■ 3 ■ 4 ■ 5+

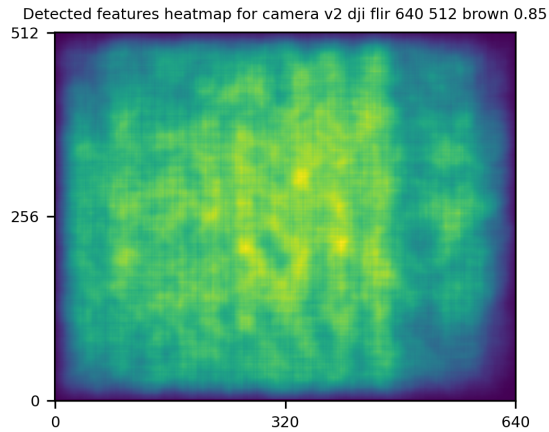
GPS/GCP/3D Errors Details

GPS	Mean	Standard Deviation	RMS Error
X Error (meters)	-0.004	0.903	0.903
Y Error (meters)	0.000	0.270	0.270
Z Error (meters)	0.008	0.257	0.257
Total			0.819

3D	Mean	Standard Deviation	RMS Error
X Error (meters)	0.026	0.028	0.038
Y Error (meters)	0.036	0.046	0.059
Z Error (meters)	0.105	0.155	0.187
Total			0.123

	Absolute	Relative
Horizontal Accuracy CE90 (meters)	1.506	0.096
Vertical Accuracy LE90 (meters)	0.410	0.240

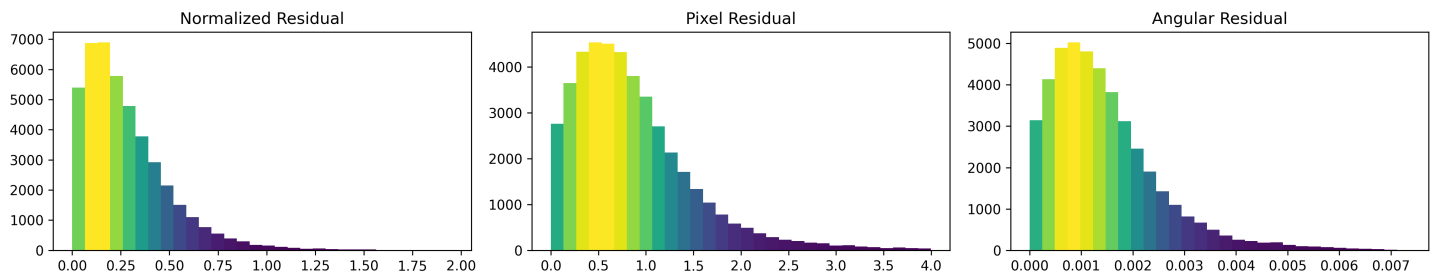
Features Details



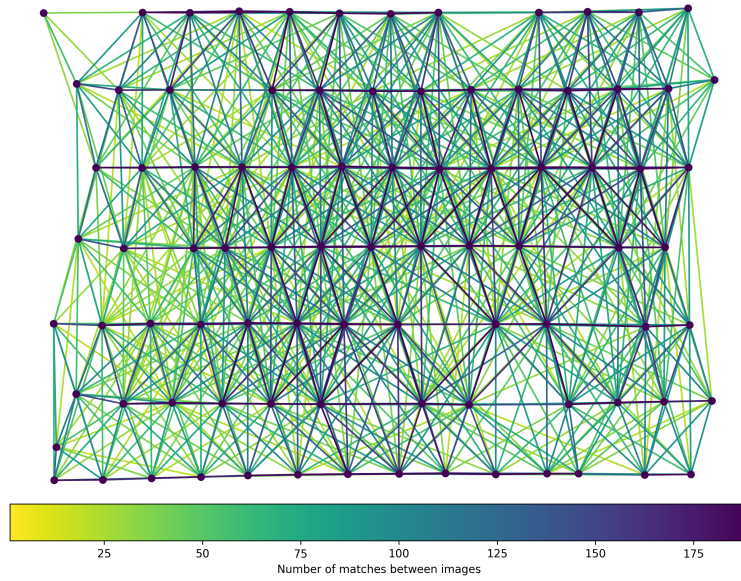
	Min.	Max.	Mean	Median
Detected	674	1497	1135	1161
Reconstructed	88	756	507	496

Reconstruction Details

Average Reprojection Error (normalized / pixels / angular)	0.28 / 0.86 / 0.00145
Average Track Length	3.84 images
Average Track Length (> 2)	5.43 images



Tracks Details



Length	2	3	4	5	6	7	8	9	10
Count	5435	2152	1200	718	540	416	325	274	221

Camera Models Details

v2 dji flir 640 512 brown 0.85

	k1	k2	k3	p1	p2	focal	aspect_ratio	cx	cy
Initial	0.0000	0.0000	0.0000	0.0000	0.0000	0.8500	1.0000	0.0000	0.0000
Optimized	-0.0101	0.0370	0.0285	0.0004	-0.0000	0.8423	1.0000	0.0045	0.0064

