

ODM Quality Report

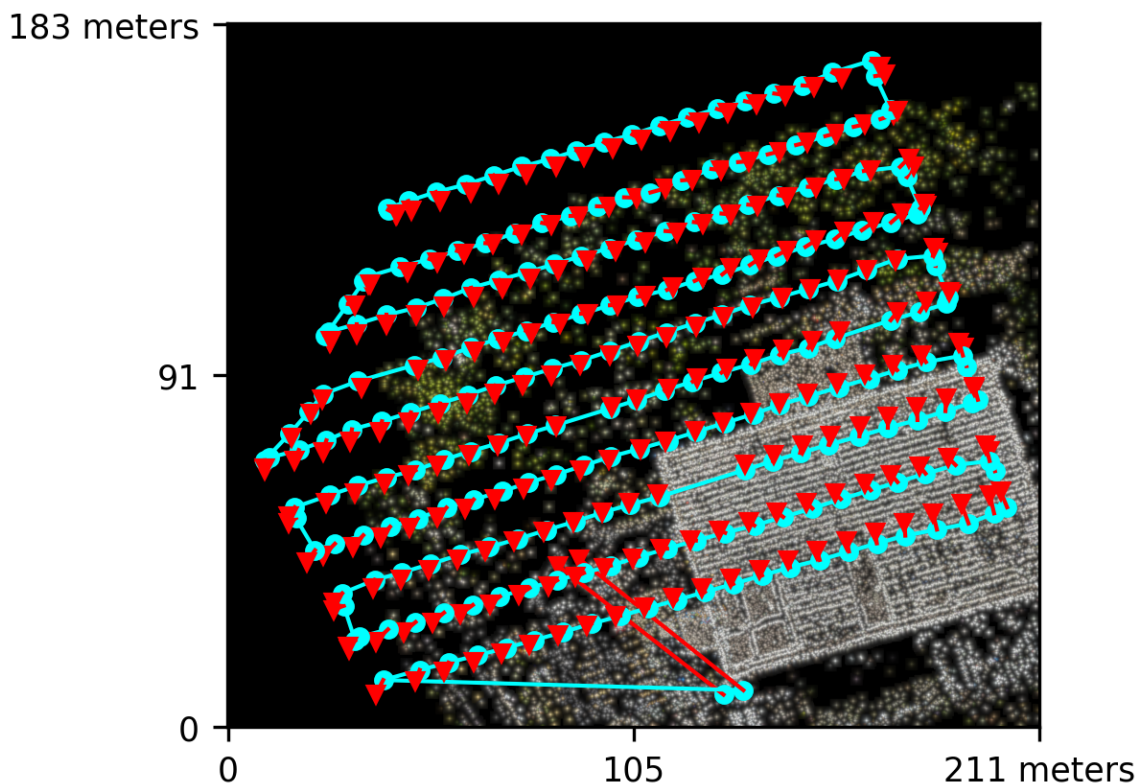
Processed with ODM version 3.1.7

Dataset Summary

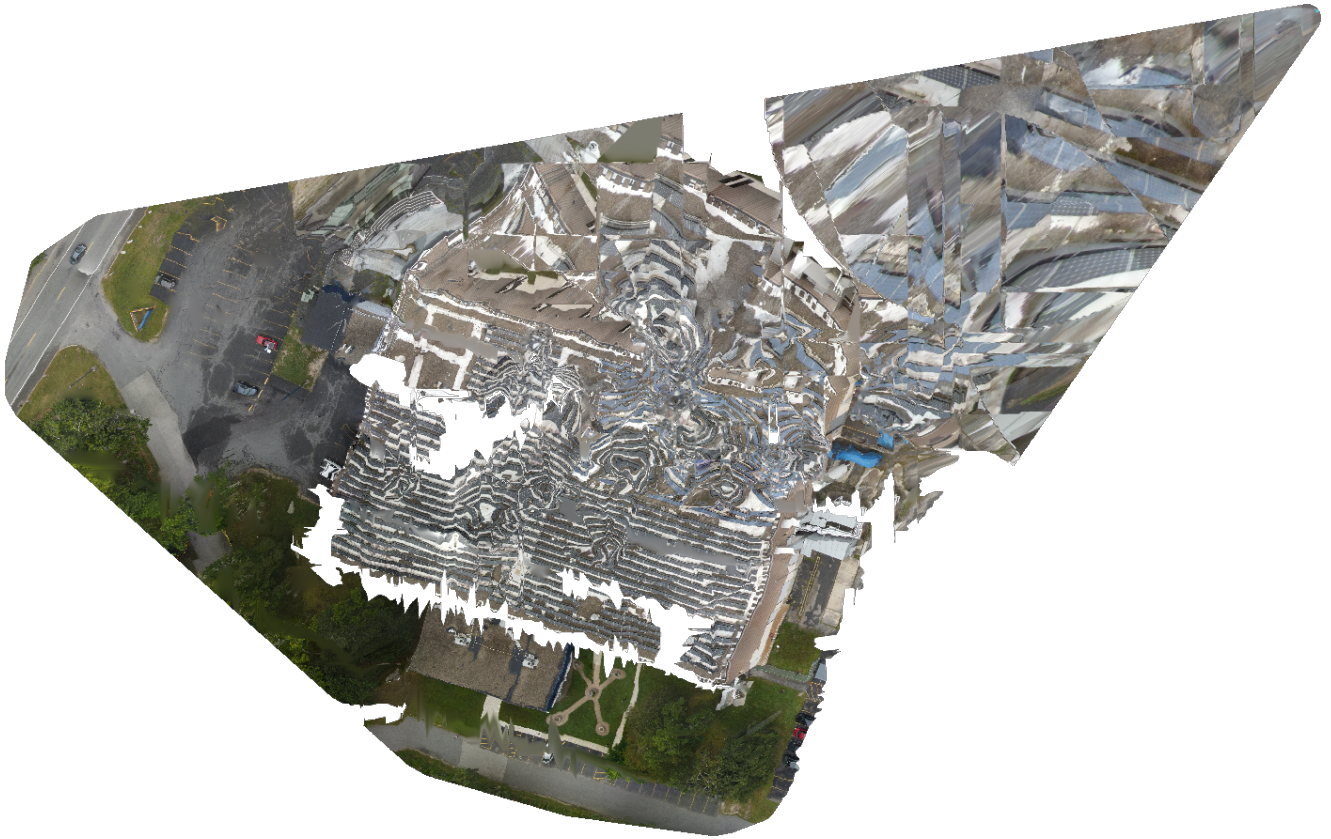
Date	09/09/2023 at 14:23:58
Area Covered	0.031883 km ²
Processing Time	4.0h:5.0m:39.0s
Capture Start	09/09/2023 at 04:39:48
Capture End	09/09/2023 at 05:07:48

Processing Summary

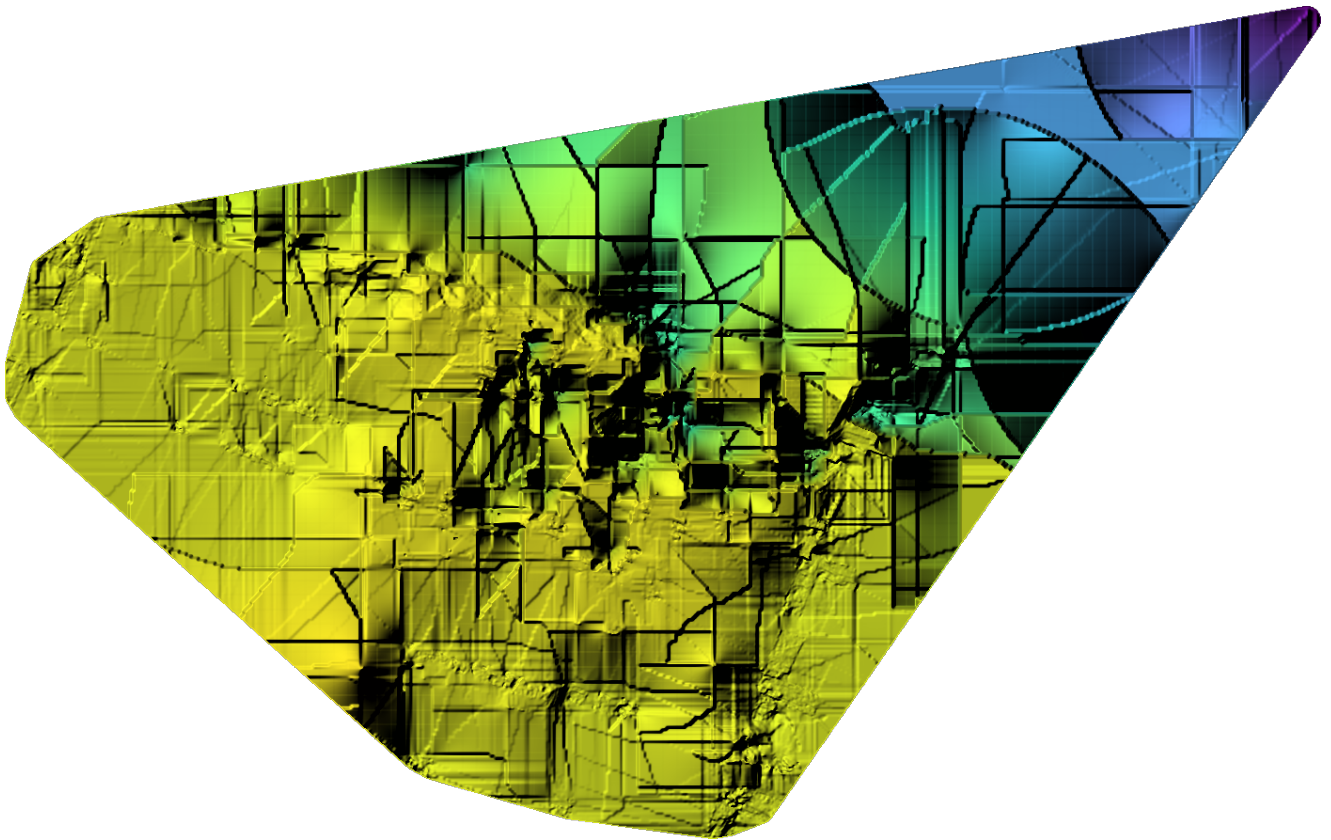
Reconstructed Images	237 over 239 shots (99.2%)
Reconstructed Points (Sparse)	449179 over 455561 points (98.6%)
Reconstructed Points (Dense)	207,086 points
Average Ground Sampling Distance (GSD)	0.7 cm
Detected Features	8,302 features
Reconstructed Features	7,776 features
Geographic Reference	GPS
GPS errors	2.82 meters



Previews



Orthophoto

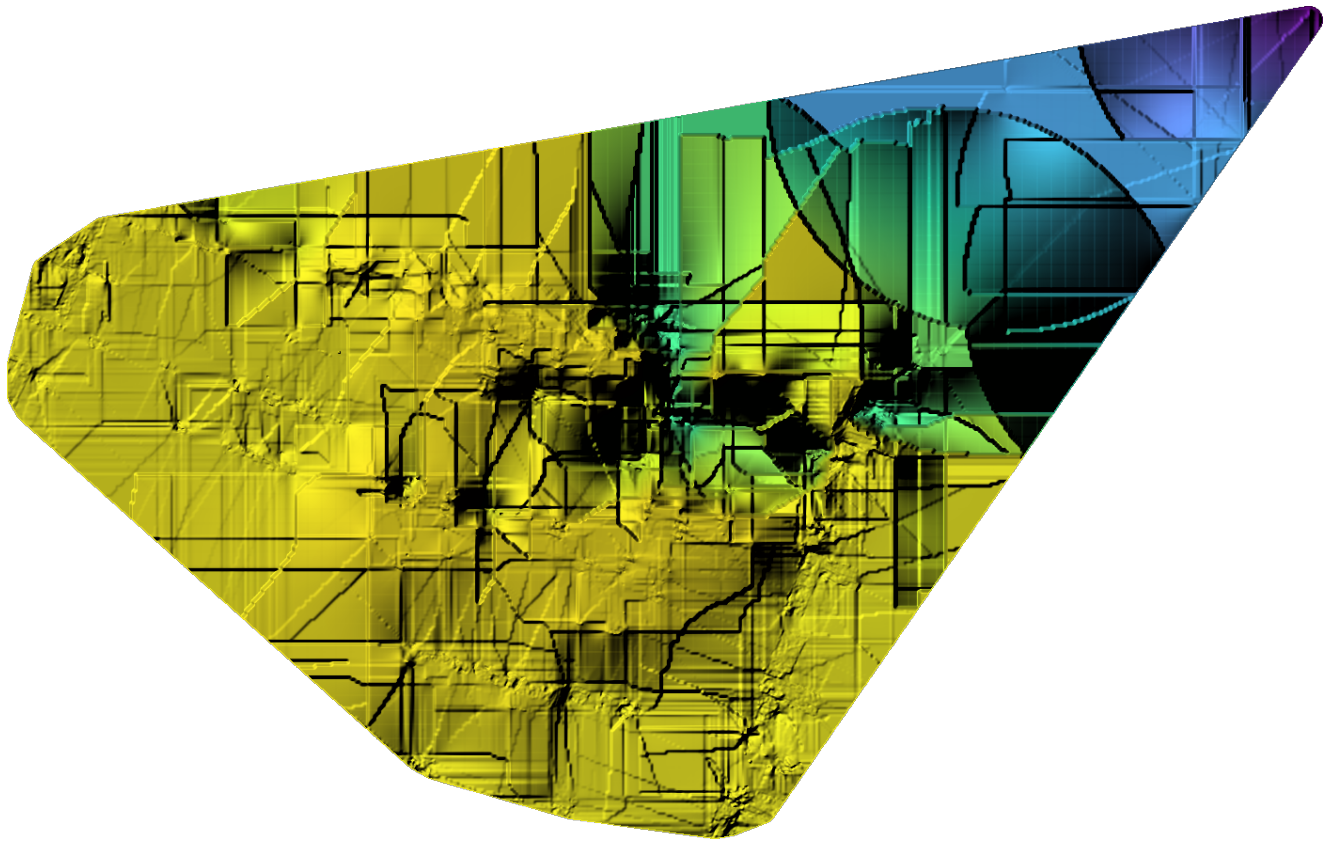


Digital Surface Model



-375.04m

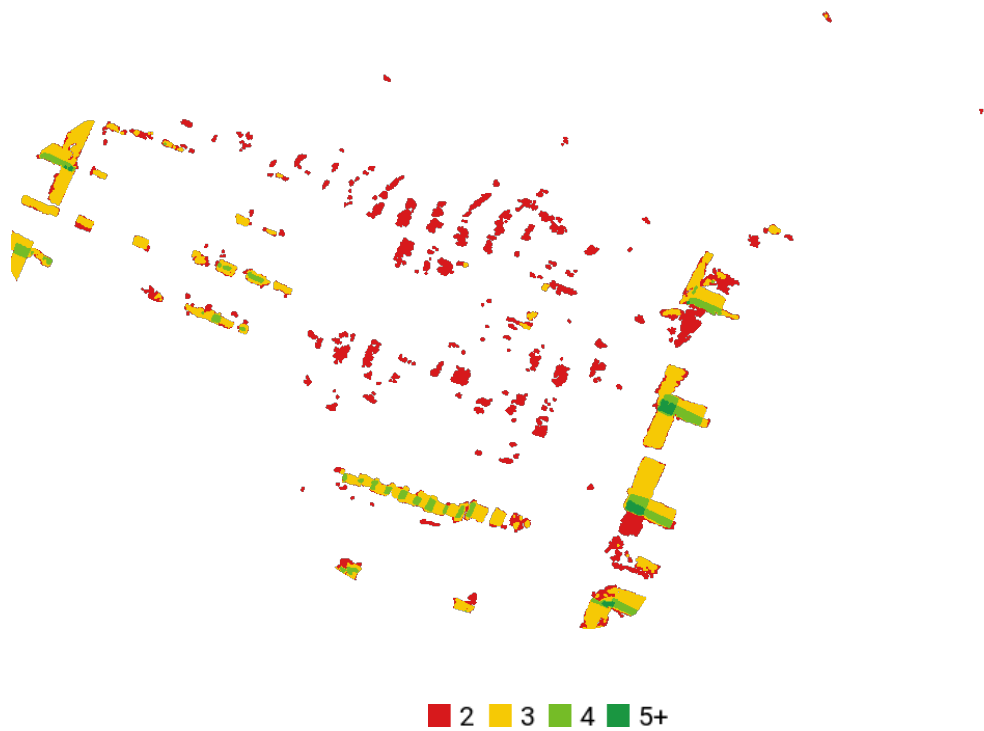
10.51m



Digital Terrain Model



Survey Data



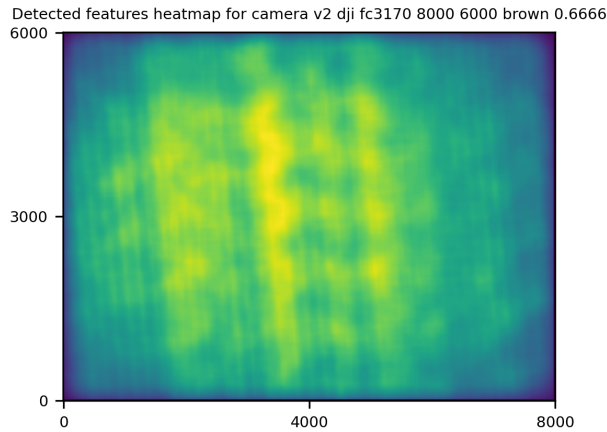
GPS/GCP/3D Errors Details

GPS	Mean	Standard Deviation	RMS Error
X Error (meters)	0.150	4.259	4.262
Y Error (meters)	0.176	3.600	3.605
Z Error (meters)	0.102	0.856	0.862
Total			2.820

3D	Mean	Standard Deviation	RMS Error
X Error (meters)	0.057	0.089	0.106
Y Error (meters)	0.039	0.063	0.074
Z Error (meters)	0.069	0.140	0.156
Total			0.117

	Absolute	Relative
Horizontal Accuracy CE90 (meters)	3.619	0.167
Vertical Accuracy LE90 (meters)	1.223	0.152

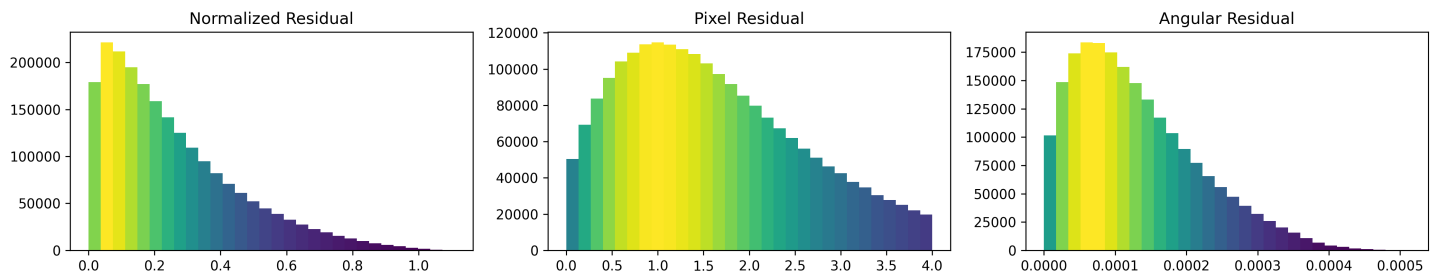
Features Details



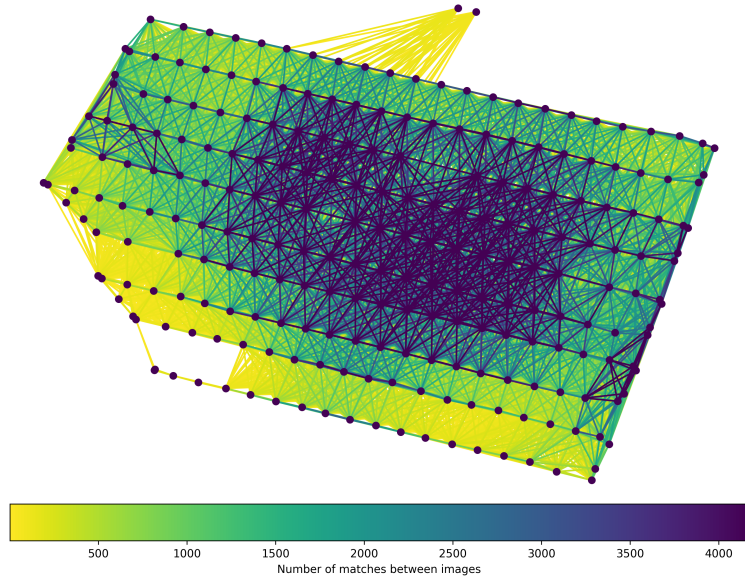
	Min.	Max.	Mean	Median
Detected	206	31033	10760	8302
Reconstructed	148	29367	9990	7776

Reconstruction Details

Average Reprojection Error (normalized / pixels / angular)	0.25 / 1.59 / 0.00013
Average Track Length	5.27 images
Average Track Length (> 2)	7.40 images



Tracks Details



Length	2	3	4	5	6	7	8	9	10
Count	177140	69745	45894	32226	22198	13629	11132	9752	8587

Camera Models Details

v2 dji fc3170 8000 6000 brown 0.6666

	k1	k2	k3	p1	p2	focal	aspect_ratio	cx	cy
Initial	0.0000	0.0000	0.0000	0.0000	0.0000	0.6667	1.0000	0.0000	0.0000
Optimized	0.0167	-0.0002	0.0000	0.0075	0.0161	0.8926	1.0000	0.7860	0.5511

